



Image: <https://www.wildlife.ca.gov/Conservation/Mammals/Pronghorn>

# Cholame-Carrizo Pronghorn Update

Craig Fiehler (created all maps), Bob Stafford, Dave Hacker

Carrizo Colloquium, SLO City Library

May 11, 2018

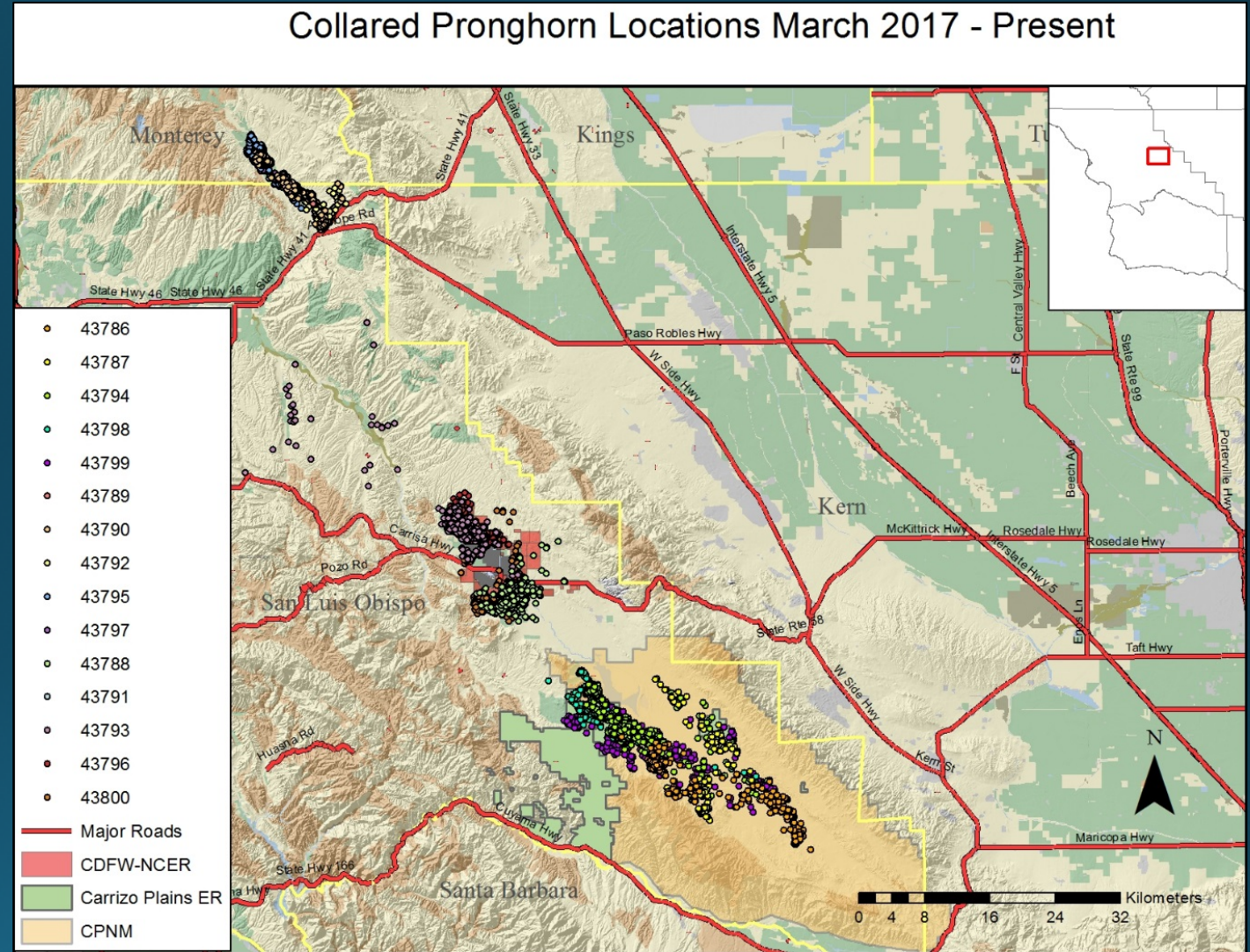




15 collared in March 2017  
5 in each subherd

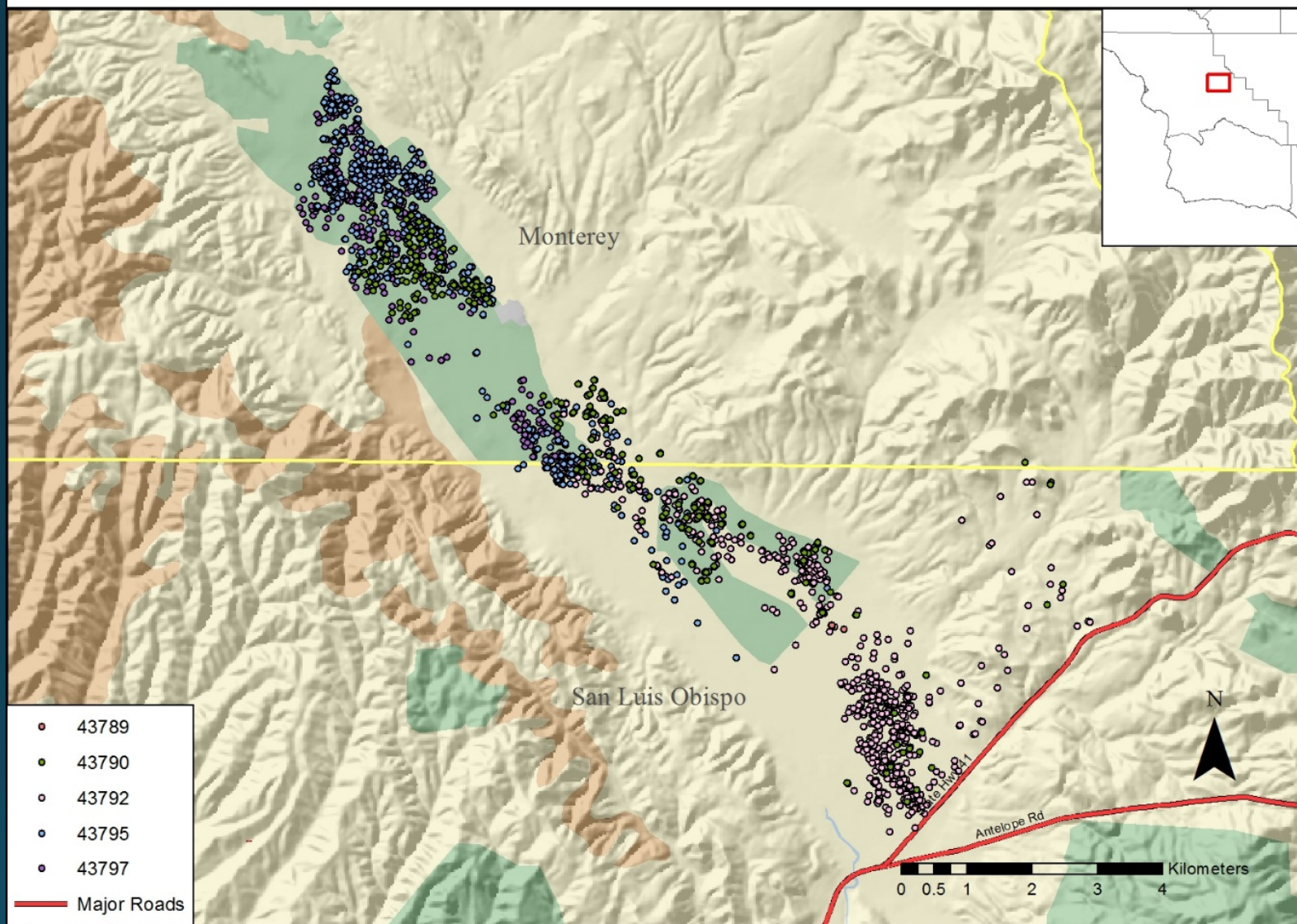
8 of those have died for no  
obvious reason

7 alive and still providing  
data





## Collared Pronghorn Cholame, March 2017 - May 2018

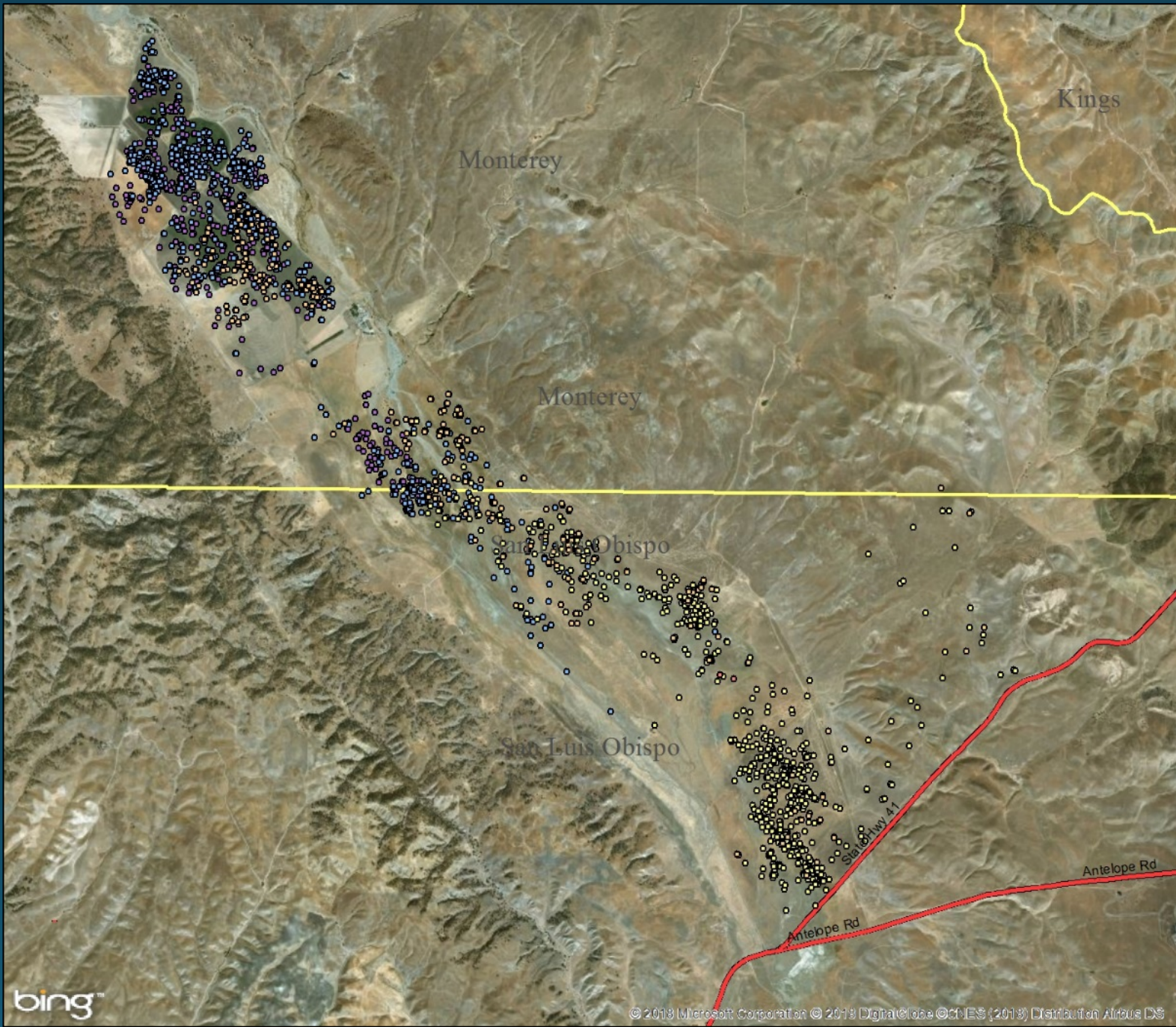


None crossing  
Highway 41 or 46

Heavy use of  
alfalfa fields

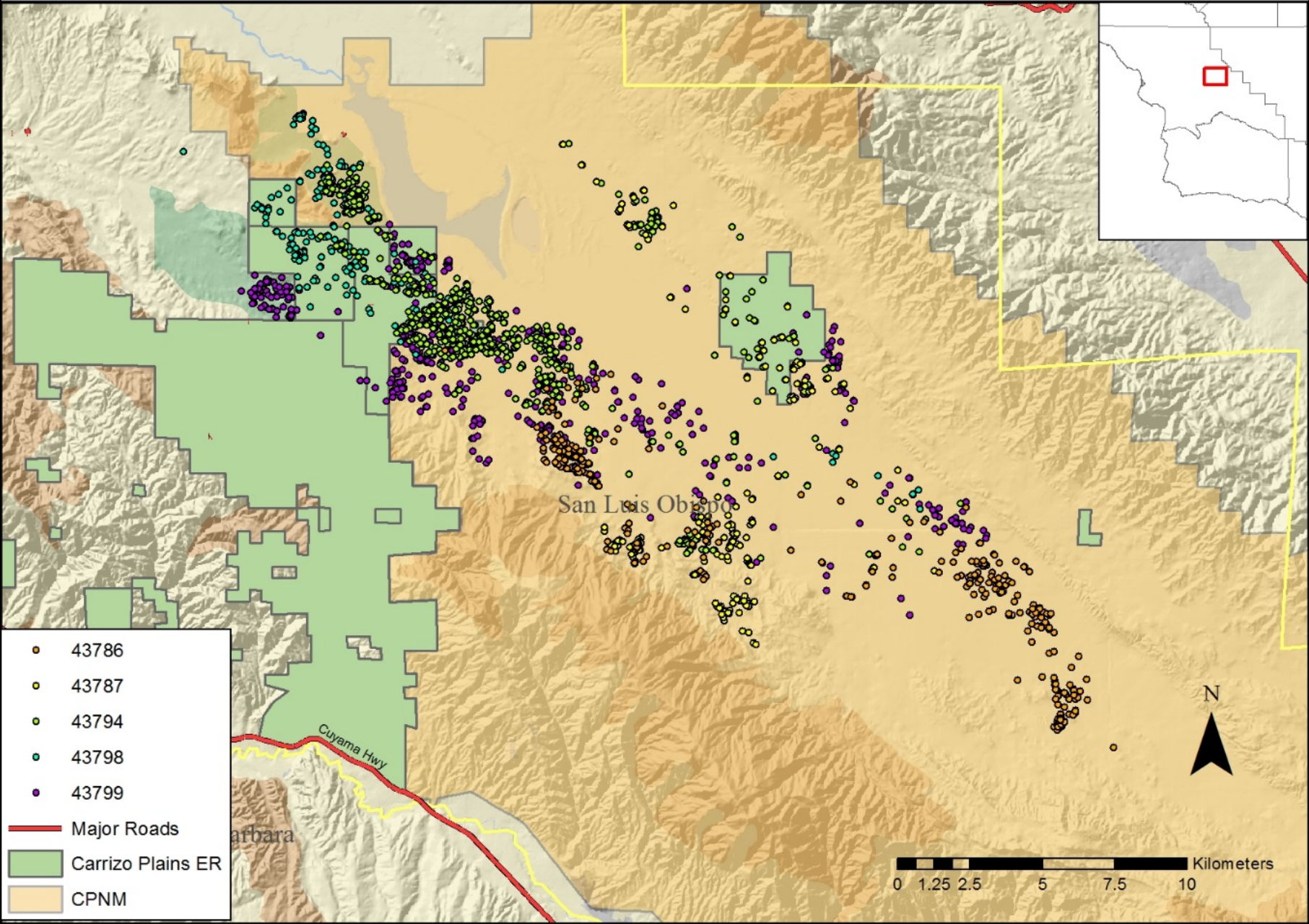








# Collared Pronghorn CPNM, March 2017 - May 2018

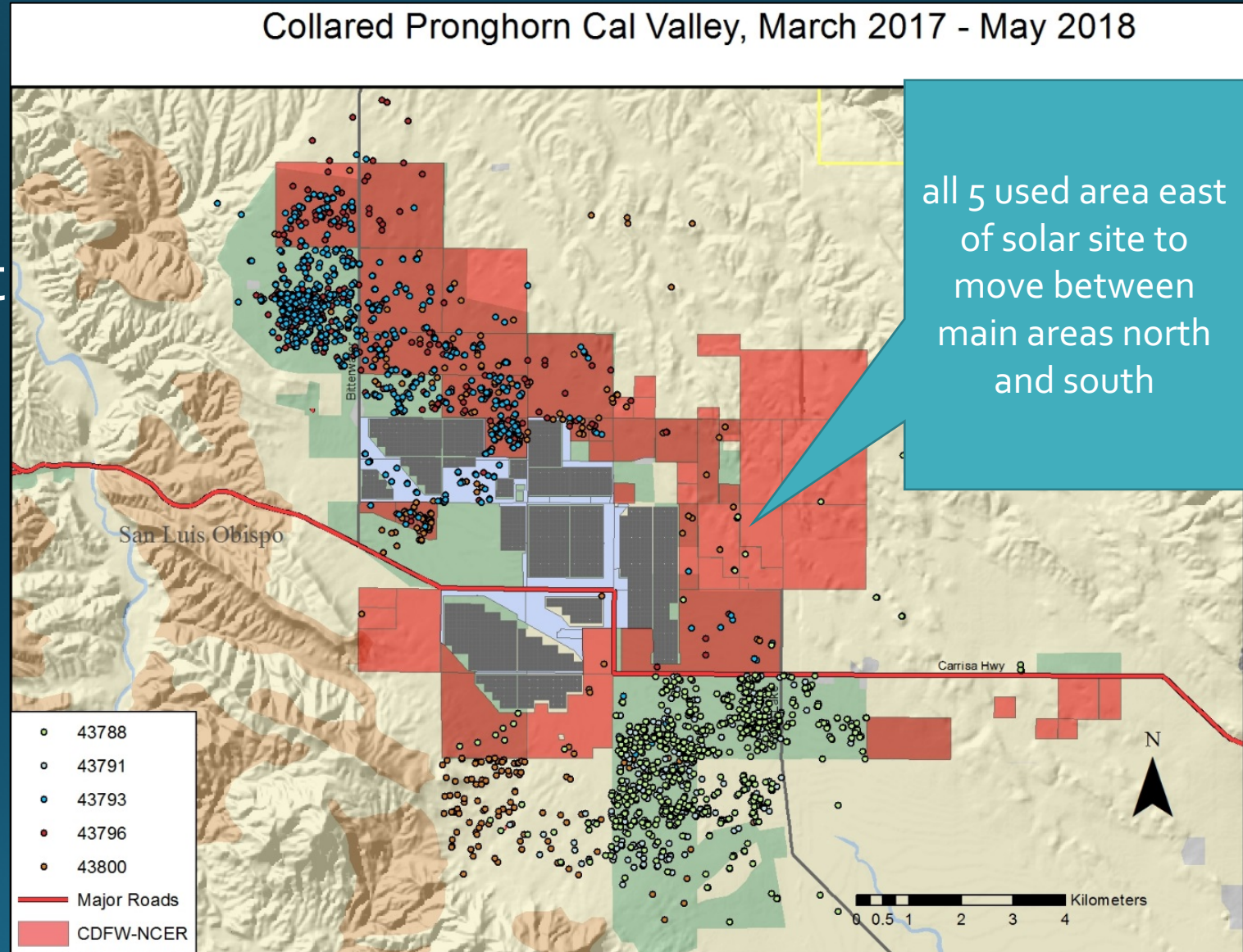




Most points in barley fields  
-tilled fields very important

Low use of Topaz  
Stewardship Lands

Topaz solar site appears to  
be a movement barrier





# Numbers

- $\approx 25$  in Carrizo Plains National Monument area
- $\approx 45$  in Cal Valley/North Carrizo
- $\approx 25$  in Cholame Valley
- $\approx 1/2$  of the 2010 population size





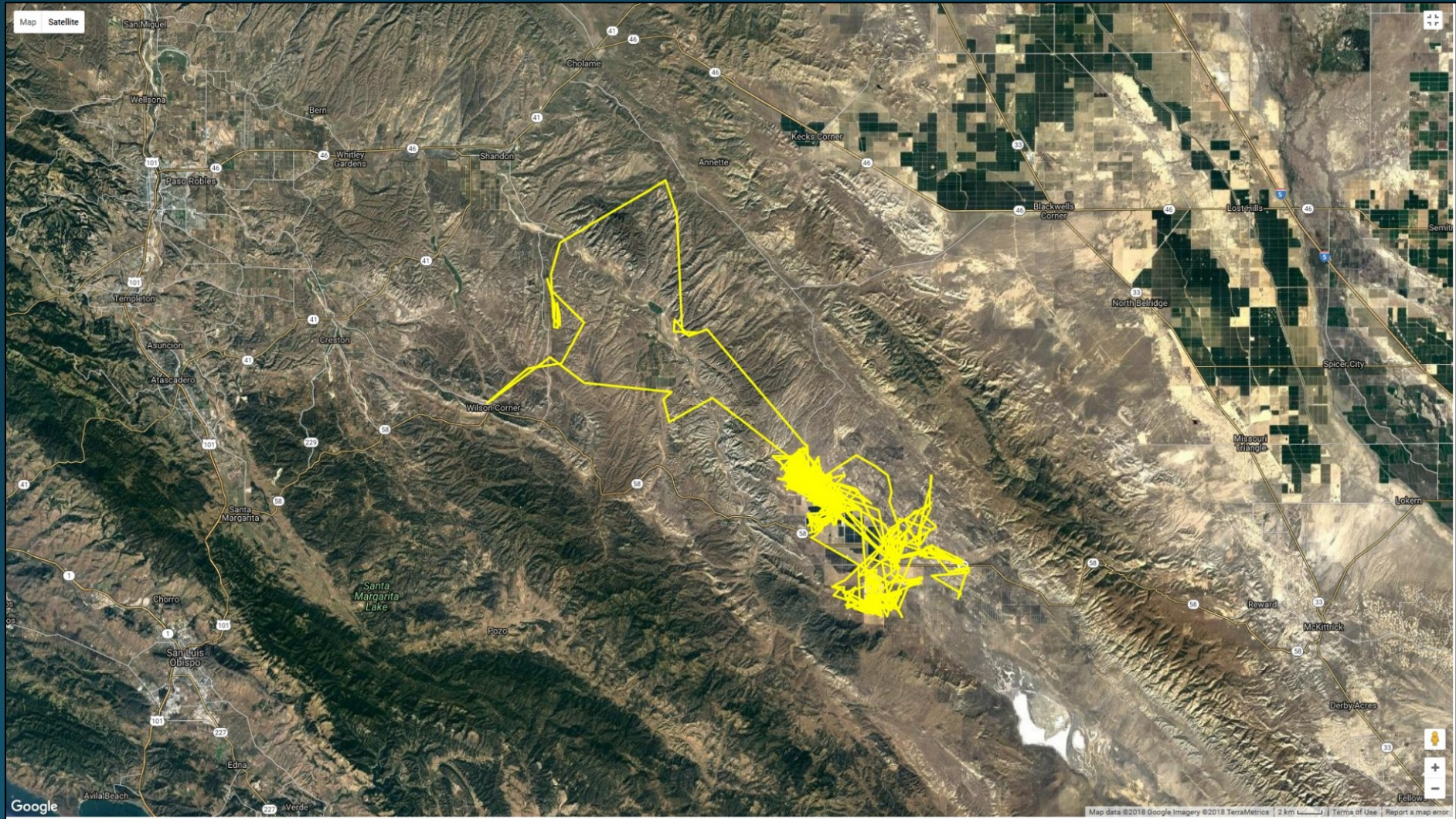
# Other Discussion Items

- Most collared were 5-7 years old, suggesting low recruitment
- Long-distance movements by some
- No exchange detected between three subherds





# Doe on a Walkabout





# Thank You

